



HELLIWELL & CO
ESTATE AGENTS

Hamilton Road, Ealing, W5
£1,800 Per Calendar Month





🛏️ 1 Bedrooms | 🛋️ 1 Receptions | 🚿 1 Bathrooms | 📊 EPC Current C

Helliwell & Co. are delighted to present this modern top floor apartment, which offers ample amounts of natural light and space throughout and is offered to the market unfurnished. The property has an impressive open plan living area with a modern kitchen featuring integrated appliances, a large double bedroom with ample built-in storage, a stylish bathroom fully equipped with a bathtub and overhead shower feature. Further benefits include attractive wooden flooring, underfloor heating, spot lights, a sky light feature and a neutral décor throughout. Available for an immediate move in.

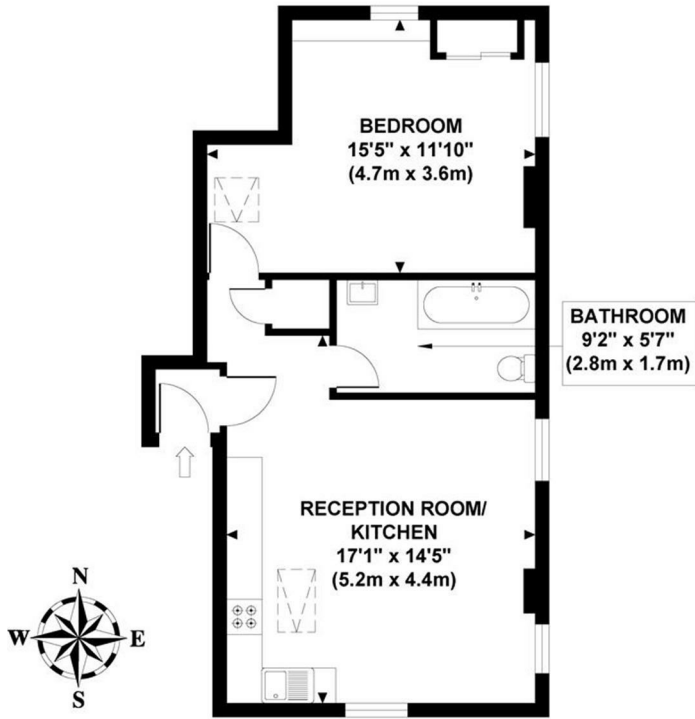
Located on the popular Hamilton Road in Ealing Broadway, the property is ideally located for access to both Ealing Broadway (Central, District, Elizabeth and mainline) and Ealing Common (District and Piccadilly lines) tube stations, as well as the beautiful open spaces of Ealing Common. There are multiple local shops, cafes and restaurants nearby, including the bustling Ealing Broadway shopping centre and popular new developments Dickens Yard and Filmworks.

- Recently Refurbished
- Fantastic Open Plan Living
- Stylish Bathroom
- Council Tax Band D
- £369.00 Holding Deposit (1 week of rent)
- Fantastic Condition
- Modern Integrated Kitchen
- Large Double Bedroom
- £1846.15 Security Deposit (5 weeks of rent)
- Long Term (24 months+)

HELLIWELL & CO.

HAMILTON ROAD

Approximate Gross Internal Area
460 sq ft / 42.70 sq m



THIRD FLOOR
GROSS INTERNAL
FLOOR AREA 460 SQ FT

Although every attempt has been made to ensure accuracy,
all measurements are approximate and no responsibility is taken for any error, omission, or mid-statement.
This floor plan is for illustrative purposes only and not to scale. Measured in accordance to RICS standards.

