



HELLIWELL & CO
ESTATE AGENTS

Mount Park Crescent, Ealing, W5
Guide Price £595,000





 2 Bedrooms |  1 Receptions |  1 Bathrooms |  EPC Current B

Helliwell & Co. are proud to present a vast two bedroom flat, which offers a perfect blend of modern living and convenience within a prestigious development on one of Ealing's most desirable roads.

Offered to the market with a Share of Freehold and no onward chain, the property spans over 800sqft, and boasts a sleek and contemporary design, enhanced by its neutral décor that allows for personal touches. The flat features a large open plan reception with a modern kitchen featuring top of the range, integrated appliances, two spacious bedrooms and a contemporary main bathroom, equipped with a bathtub, overhead shower, and a stylish vanity mirror, ensuring comfort and elegance.

The property benefits from both a private entrance, and private patios adding to its appeal. Additionally, further benefits include double-glazed sash windows, gas central heating, engineering wooden flooring, video entry intercom systems, keyless entry, communal gardens, and bike storage, all within a high-end, secure development.

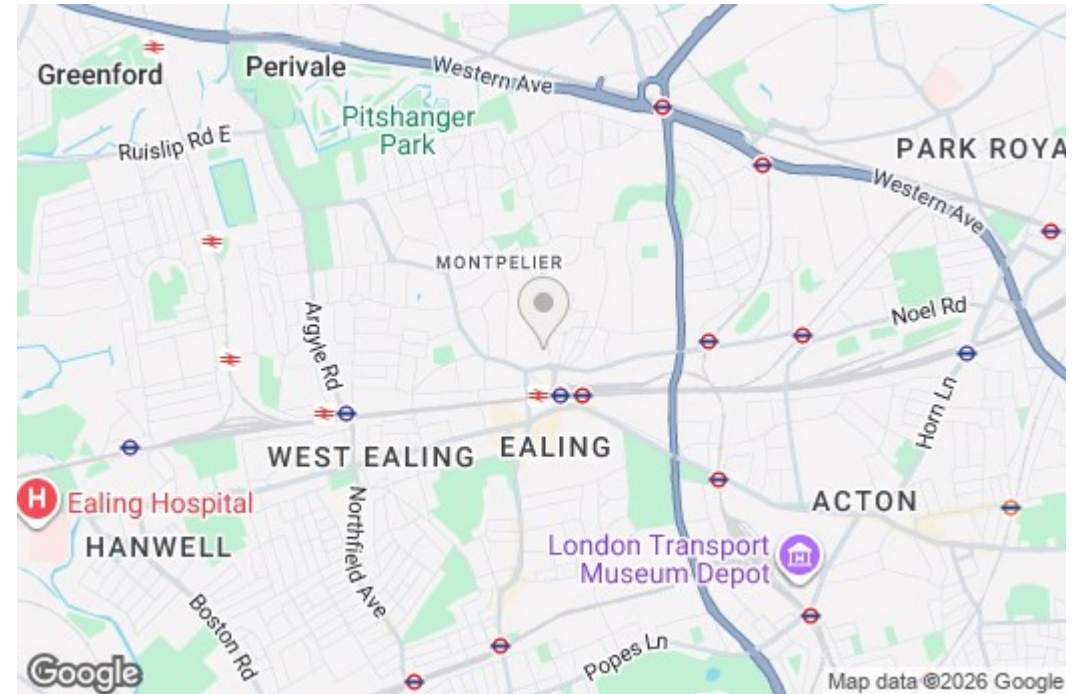
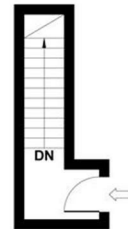
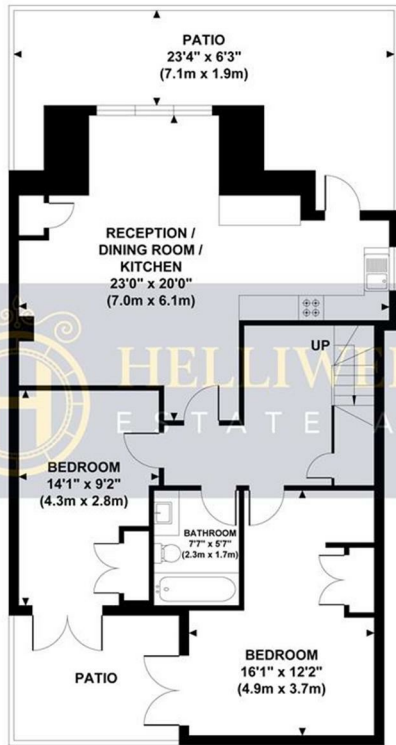
Located in a highly sought-after area, Mount Park Crescent is widely regarded as one of the most prestigious roads in W5. Just a stone's throw from Ealing Broadway Station where it offers the Elizabeth Line, Central Line, District Line & GWR, making commuting into and around Central London a breeze. With its abundance of cafes, shops, restaurants and bars around the Broadway, the location is also perfect for exploring a variety of beautiful parks and benefiting from a range of exceptional schools for all ages.

- Well Presented Two-Bedroom Apartment
- No Onward Chain
- Excellent Location
- Service Charge: £1,000pa (Approx)
- Communal Gardens
- Private Patios
- Video & Keyless Entry
- Share of Freehold (999 year lease)
- Immaculate Condition
- Bike Storage

MOUNT PARK CRESCENT

Approximate Gross Internal Area

817 sq ft / 75.9 sq m



Although every attempt has been made to ensure accuracy, all measurements are approximate and no responsibility is taken for any error, omission, or mid-statement. This floor plan is for illustrative purposes only and not to scale. Measured in accordance to RICS standards.