







 2 Bedrooms |  1 Receptions |  1 Bathrooms |  EPC Current C

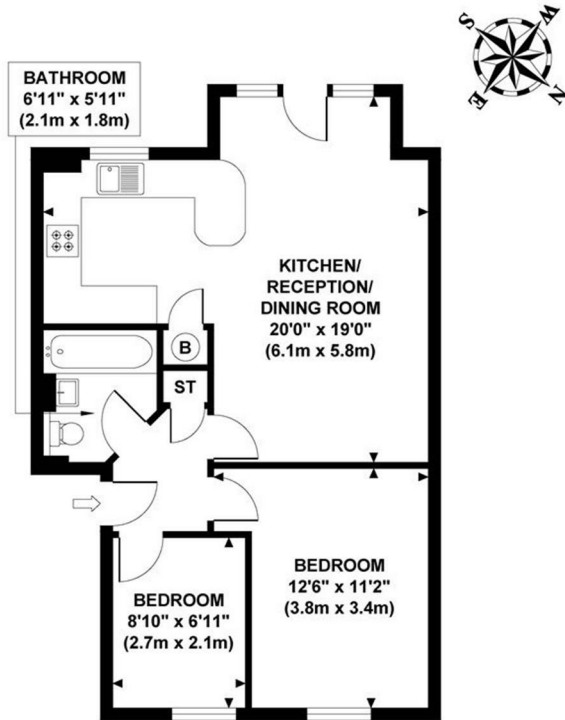
Helliwell & Co. are proud to present this lovely ground floor apartment, which is placed within a sought-after purpose built development and offers ample natural light and space throughout. The property has an entrance hallway with built in storage, luminous and spacious reception/dining room overlooking leafy gardens, an open plan kitchen with peninsula, two bedrooms and a modern porcelain-tiled family bathroom with bath and shower. Further benefits include residents parking for several cars, expansive communal gardens and wooden flooring.

Bay Court is ideally located for access to several stations including Ealing Common (Piccadilly and District), South Ealing (Piccadilly), Ealing Broadway (Central, District, Elizabeth and Mainline), and Acton Town (Piccadilly & District) station. With Ealing, Kew, Chiswick and Acton all within easy reach, there is an abundance of shops, boutiques, bars, restaurants and parks.

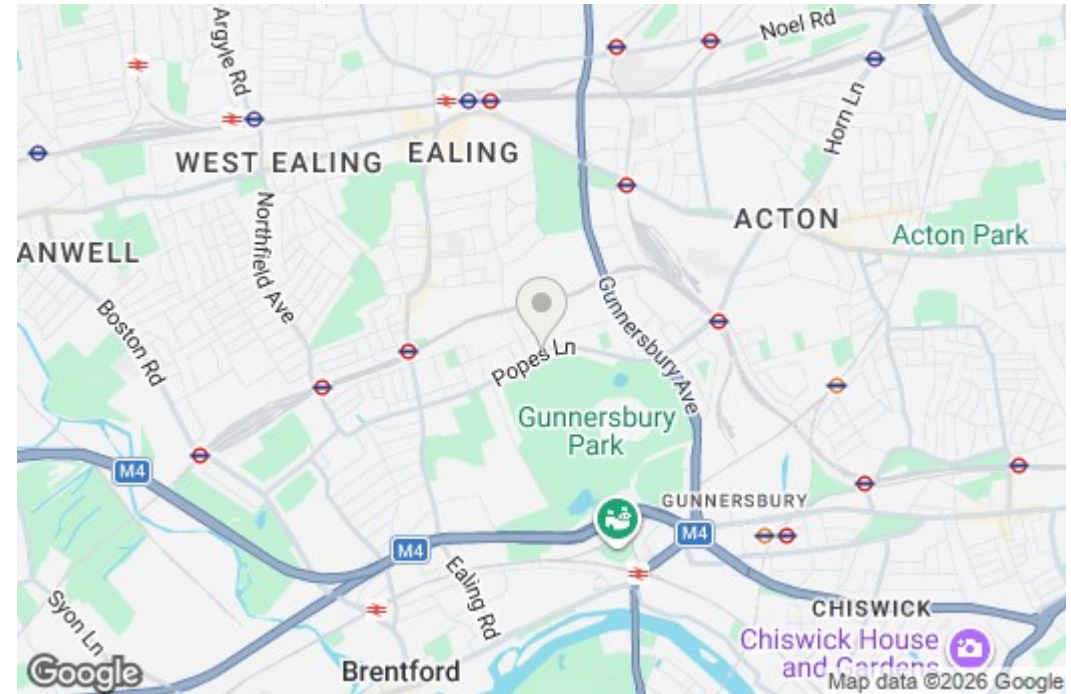
- Ground Floor Apartment
- Contemporary Finish
- Spacious Kitchen
- Long Let (12-24 months+)
- Council tax band: D
- Parking for Several Cars
- Two Bedrooms
- Communal Gardens
- Deposit: £1961.53

BAY COURT

Approximate Gross Internal Area
564 sq ft / 52.39 sq m



**GROUND FLOOR
GROSS INTERNAL
FLOOR AREA 564 SQ FT**



Although every attempt has been made to ensure accuracy, all measurements are approximate and no responsibility is taken for any error, omission, or mid-statement. This floor plan is for illustrative purposes only and not to scale. Measured in accordance to RICS standards.